

Streets ahead in Derbyshire

DERBYSHIRE

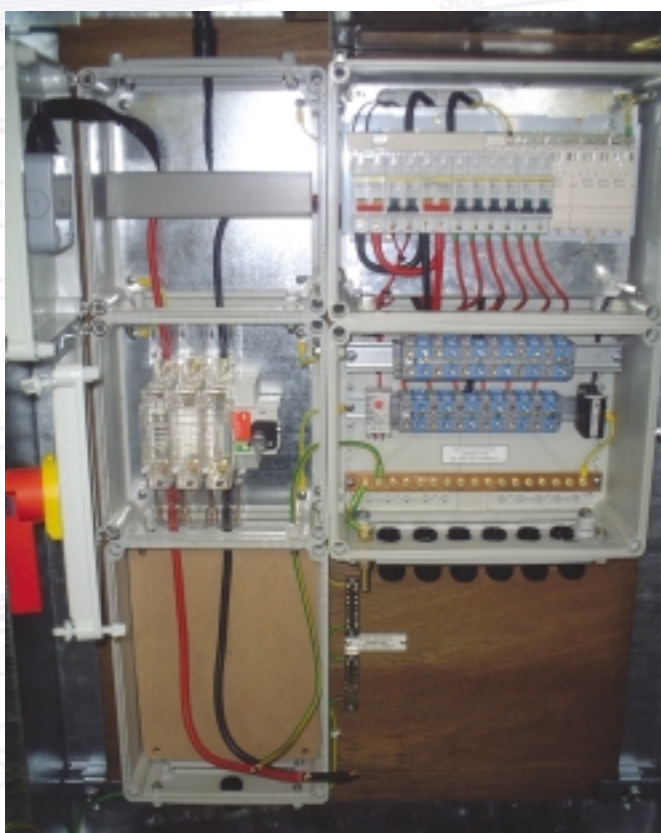
What began as a tricky problem for the lighting engineers at Derbyshire County Council, ended up providing a solution that out performs their previous installations.

BEFORE

Metal distribution boards were normally mounted inside a metal cabinet which was then installed in a standard feeder pillar. A change to the manufacturer's specification meant that their standard products would no longer fit inside the 1200mm lighting pillar, which is when Derbyshire County Council began looking at alternatives.

AFTER

Initially it was the wide range of standard sizes that Derbyshire County Council found attractive about the Fibox products, and the fact that they could retain their existing components previously mounted within the Fibox enclosure. They were also quick to realise that the product offered many other advantages.



Streets ahead in Derbyshire

DERBYSHIRE

Another major advantage discovered by Derbyshire County Council was the energy saving aspect of feeder pillar heating. Conventional pillars require a 40W heater, mounted externally to the electrical installation, to reduce moisture inside the pillar. Because of the superior IP rating, the systems installed for the County Council are using a heater which sits inside the Fibox enclosure. This is DIN rail mounted and uses 75% less power than the conventional units.

- *Pre-assembly saves time on site*
- *Cable access is easier, eliminating problems during installation*
- *Better access for maintenance*
- *Anti-tamper cover screws improve security*
- *Cables can be passed through a gland plate, rather than direct onto the enclosure*
- *Polycarbonate is easier to cut and machine than metal*
- *Compact and modular. This has enabled Derbyshire County Council to reduce 12 way pillars from 1200mm to 950mm, thereby reducing the overall cost of an installation.*

The Fibox advantage

Chris Green (job title) at Derbyshire County Council had already gained wide experience in metal enclosures, during his time working in industry.

“ Metal suffers from corrosion and the IP rating of conventional enclosures is often compromised because of the need to either drill through the box or use knock outs. Moving to a polycarbonate system which comes with pre drilled holes and access points, that marry up precisely when two or more enclosures are joined together, solves all the inherent problems associated with metal. They also look better, with the ability to fit anti-tamper transparent hinged covers. ”

Fibox Ltd, 3 Primrose Hill Industrial Park, Orde Wingate Way, Sockton-on-Tees, Cleveland TS19 0BJ

Phone: 01642 604 400 Fax: 01642 604600 E-mail: sales@fibox.co.uk www.fibox.com